

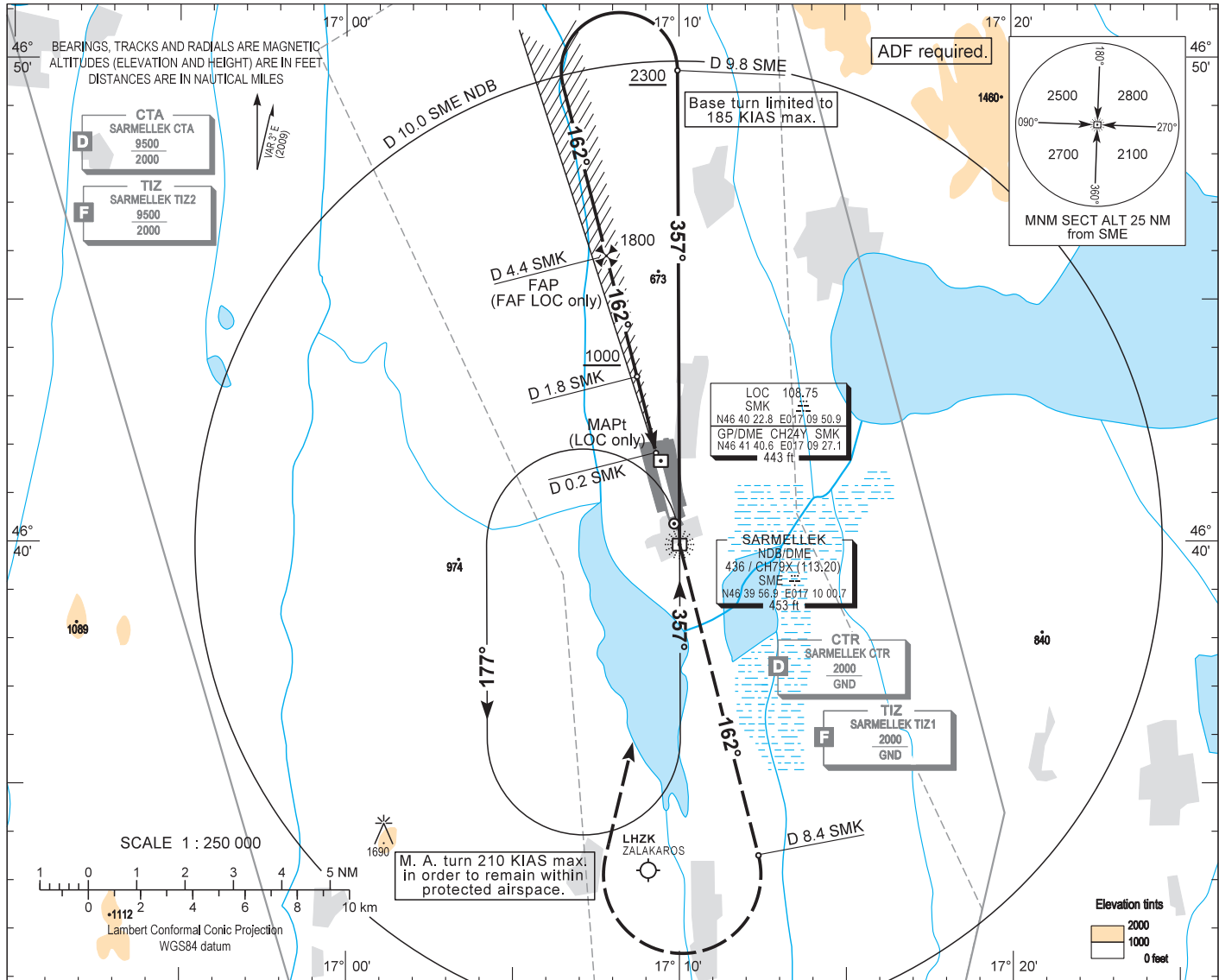
AIP HUNGARY

INSTRUMENT APPROACH CHART - ICAO

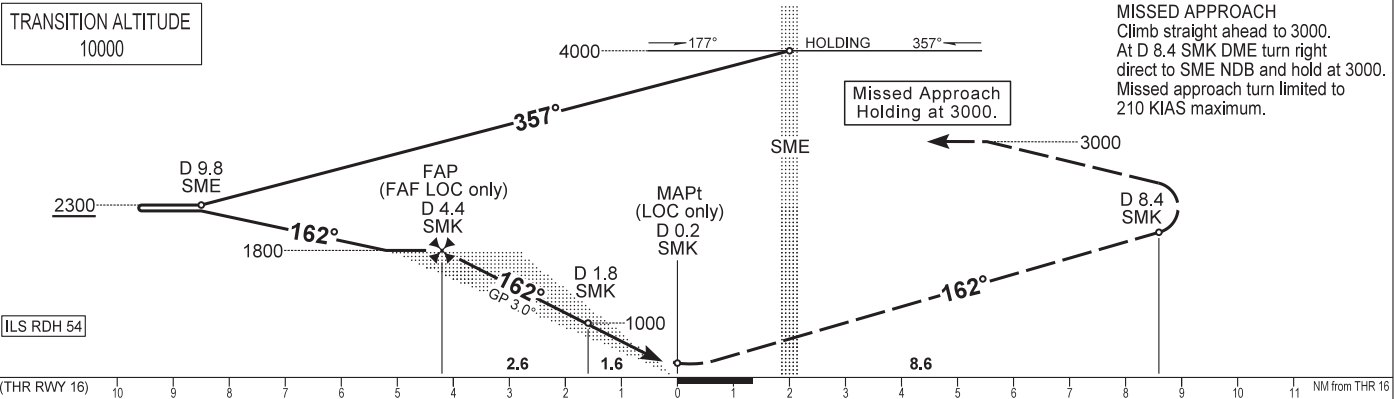
AERODROME ELEV 408  
HEIGHTS RELATED TO THR RWY 16 - ELEV 408

BALATON TOWER 134.585  
BALATON INFO 134.585  
BUDAPEST INFORMATION (WEST) 125.500

HÉVÍZ/BALATON  
ILS or LOC RWY 16  
(ACFT CAT A, B, C, D)



TRANSITION ALTITUDE  
10000



OCA (OCH)		A	B	C	D	GROUND SPEED					
STRAIGHT-IN APPROACH	Cat. I	540 (130)	550 (140)	560 (150)	570 (160)	kt	60	90	120	150	180
	LOC only	770 (360)				FAF - MAPt 4.22 NM	MIN:sec	4:14	2:49	2:07	1:41
CIRCLING APPROACH		ft AMSL	825	1030	1410						
		VIS. m	1900	2800	3700						

## AD 2 LHSM INSTRUMENT APPROACH CHART ILS OR LOC RWY 16

### Approach from SME DME:

Initial altitude: 4000.

Fly outbound on 357° for 3 minutes or D 9.8 SME DME (whichever comes first) and descend to 2300.

Turn left (185 KIAS max.) intercept the localizer inbound on 162°, then descend to 1800.

Glide path interception at D 4.4 SMK DME, then follow ILS.

### Holding procedure:

Holding fix: SME DME.

Left hand holding pattern.

Inbound track:	357°
Outbound track:	177°
Rate of turn:	3°/sec. or 25° bank angle (whichever requires lesser bank)
Outbound timing:	1 min
Minimum holding altitude:	4000
	3000 for Missed Approach