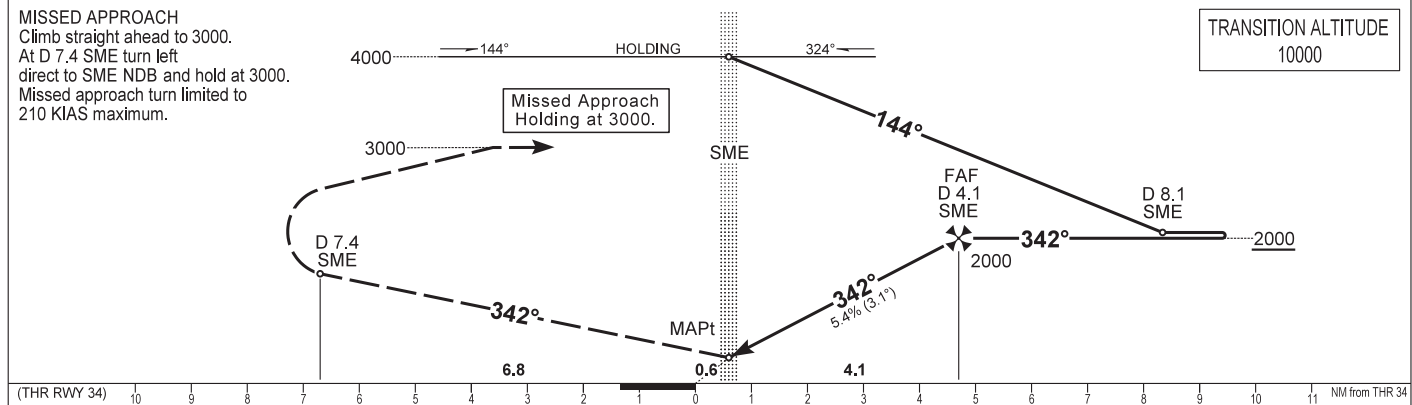
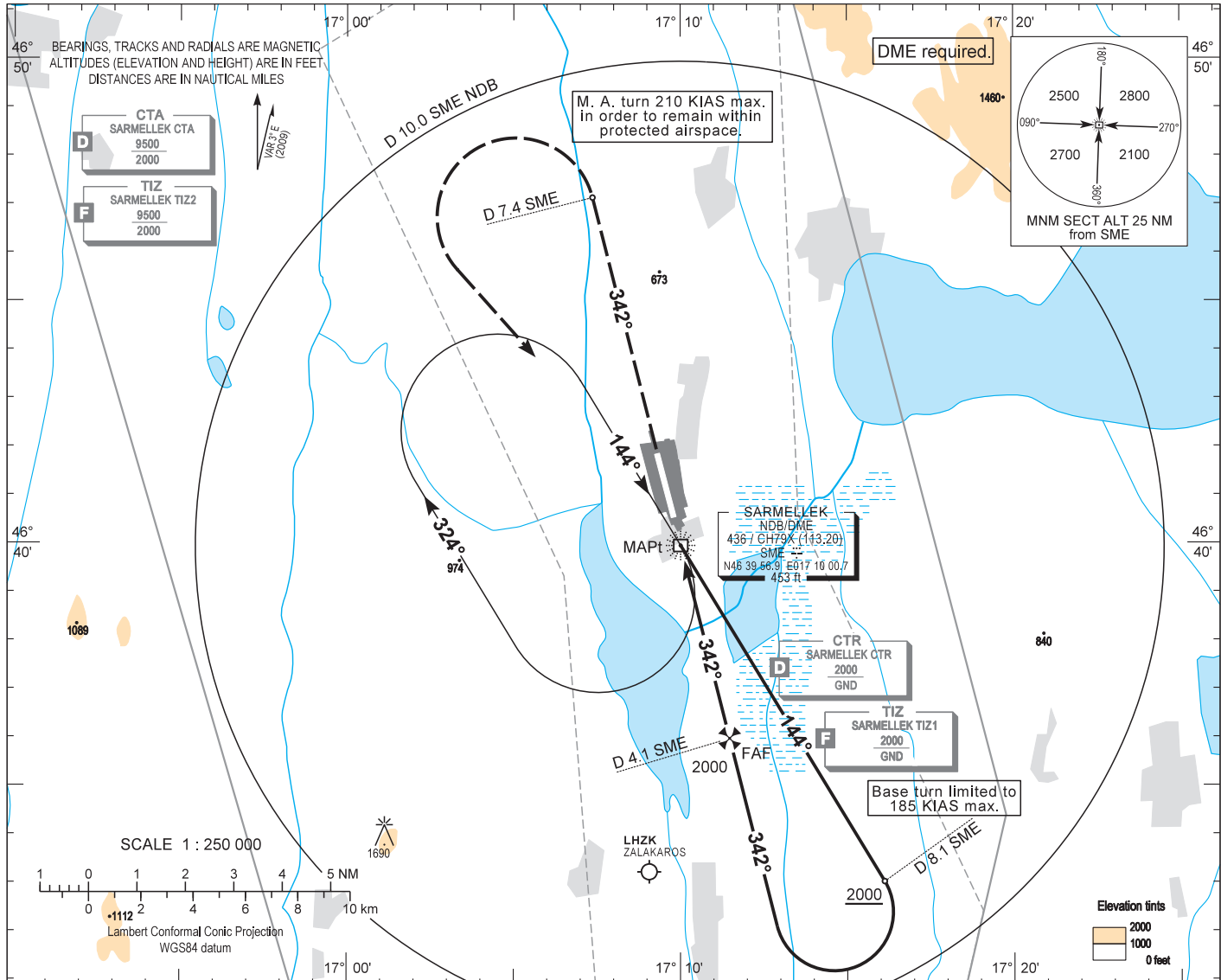


AIP HUNGARY

INSTRUMENT APPROACH CHART - ICAO
AERODROME ELEV 408
HEIGHTS RELATED TO THR RWY 34 - ELEV 399

BALATON TOWER 134.585
BALATON INFO 134.585
BUDAPEST INFORMATION (WEST) 125.500

HÉVÍZ/BALATON
NDB, RWY 34
(ACFT CAT A, B, C, D)



OCA (OCH)		A	B	C	D	GROUND SPEED						
STRAIGHT-IN APPROACH		690 (290)				kt	60	90	120	150	180	
CIRCLING APPROACH		ft AMSL	825	1030	1410	1410	FAF - MAPt 4.09 NM					
		VIS. m	1900	2800	3700	4600	MIN:sec	4:15	2:49	2:07	1:42	1:25

AD 2 LHSM INSTRUMENT APPROACH CHART NDB RWY 34

Approach from SME NDB:

Initial altitude: 4000.

Fly outbound on QDR 144 SME for 2.5 minutes or D 8.1 SME DME (whichever comes first) and descend to 2000.

Turn right (185 KIAS max.) to QDM 342 SME for final.

At D 4.1 SME DME descend to 690.

Holding procedure:

Holding fix: SME NDB.

Right hand holding pattern.

Inbound track: 144°

Outbound track: 324°

Rate of turn: 3°/sec. or 25° bank angle
(whichever requires lesser bank)

Outbound timing: 1 min

Minimum holding altitude: 4000

3000 for Missed Approach

Final approach descent: 3.10°