

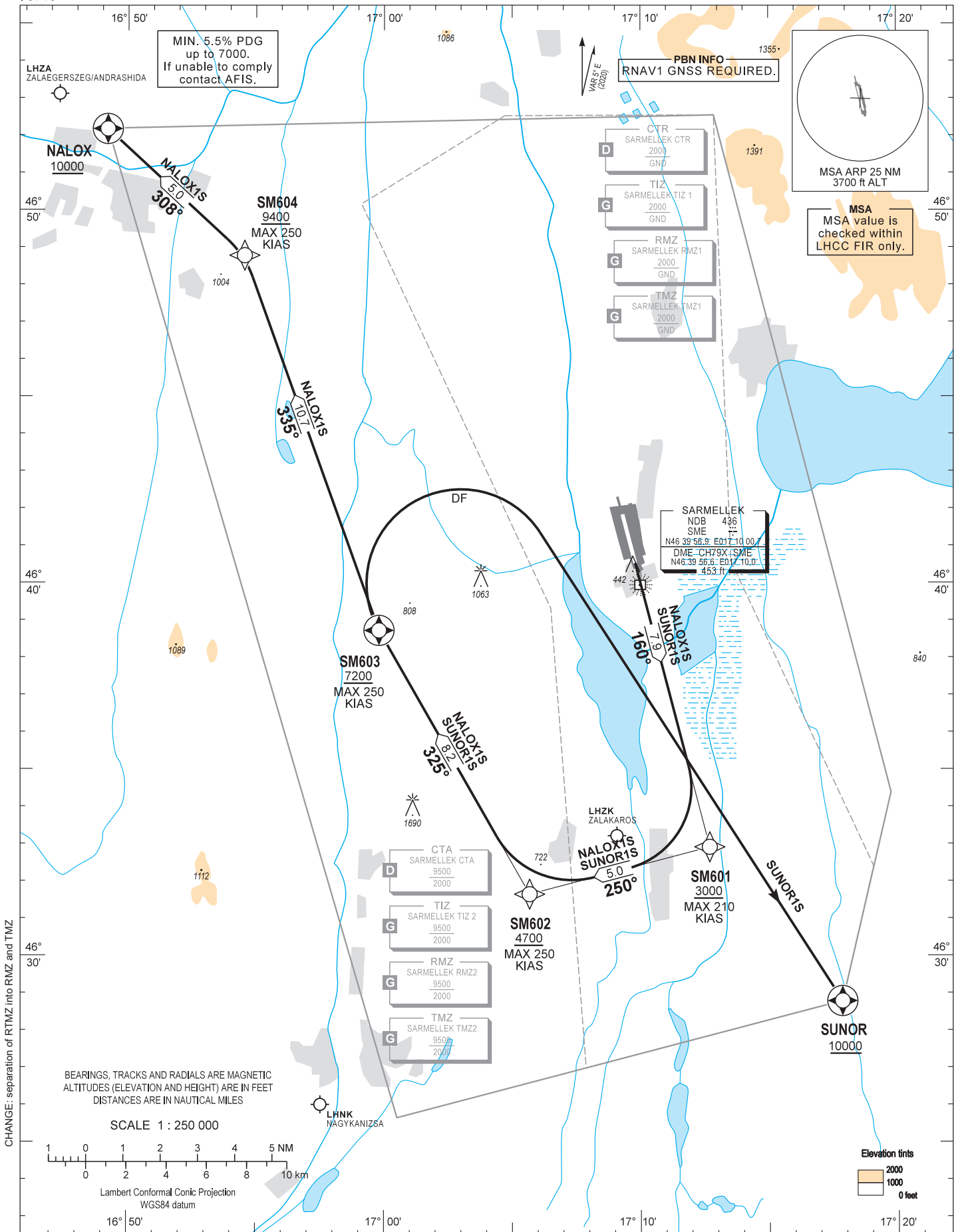
AIP HUNGARY

STANDARD DEPARTURE CHART -
INSTRUMENT (SID) -
ICAO

TRANSITION ALTITUDE
10000

BALATON TOWER 134.585
BALATON INFO 134.585
BUDAPEST INFORMATION (WEST) 125.500

HÉVÍZ/BALATON
RNAV Rwy 16
NALOX1S SUNOR1S



AD 2 LHSM STANDARD DEPARTURE CHART INSTRUMENT RWY 16

CLIMBING:

In order to reach exit altitude min. PDG 5.5% up to 7000. After departure climb initially 10000. Further climb only by ATC.

ALTIMETER SETTING:

When passing 9000 change QNH setting for Budapest QNH provided by BALATON INFO or BUDAPEST INFORMATION.

SID NAME	PROCEDURE	RESTRICTIONS
NALOX1S (NALOX ONE SIERRA DEPARTURE)	Climb to SM601 on course 160°, at or above 3000. To SM602 at or above 4700. To SM603 at or above 7200. To SM604 at or above 9400. To NALOX at or above 10000.	MAX 210 KIAS at SM601. MAX 250 KIAS at SM602, SM603, SM604.
SUNOR1S (SUNOR ONE SIERRA DEPARTURE)	Climb to SM601 on course 160°, at or above 3000. To SM602 at or above 4700. To SM603 at or above 7200. Turn right direct to SUNOR at or above 10000.	MAX 210 KIAS at SM601. MAX 250 KIAS at SM602, SM603.

Recommended navaid: SME NDB.

WAYPOINT COORDINATES

WP ID	Latitude	Longitude
SM601	N46 32 54.9	E017 12 40.7
SM602	N46 31 38.9	E017 05 40.3
SM603	N46 38 43.4	E016 59 48.4
SM604	N46 48 47.1	E016 54 33.3
NALOX	N46 52 10.5	E016 49 12.3
SUNOR	N46 28 47.0	E017 17 50.0